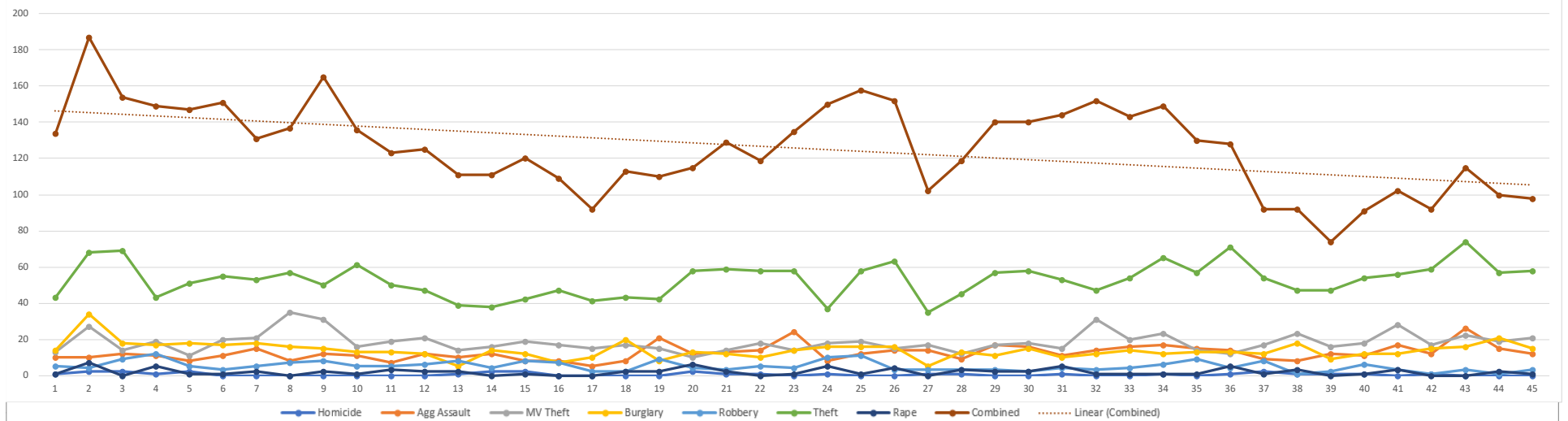




County Crime Statistics Analysis for YTD 2020

County	Week #																																													Total	% Change from Week 1	
Crime Category	1	2	3	4	5	6	7	8	9	10	11	12	13	14	15	16	17	18	19	20	21	22	23	24	25	26	27	28	29	30	31	32	33	34	35	36	37	38	39	40	41	42	43	44	45	29	NA	
Homicide	1	2	2	1	2	0	0	0	0	0	0	0	1	2	2	0	0	0	0	2	1	1	0	1	0	0	1	1	0	0	1	0	0	1	0	1	2	1	1	1	0	1	0	0	0	0	29	NA
Agg Assault	10	10	12	11	8	11	15	8	12	11	7	12	10	12	8	8	5	8	21	12	13	14	24	8	12	14	14	9	17	16	11	14	16	17	15	14	9	8	12	11	17	12	26	15	12	561	17%	
Vehicle Theft	13	27	14	19	11	20	21	35	31	16	19	21	14	16	19	17	15	17	15	10	14	18	14	18	19	15	17	12	17	18	15	31	20	23	14	12	17	23	16	18	28	17	22	19	21	828	38%	
Burglary	14	34	18	17	18	17	18	16	15	13	13	12	5	14	12	7	10	20	8	13	12	10	14	16	16	16	5	13	11	15	10	12	14	12	13	13	12	18	9	12	12	15	16	21	15	626	7%	
Robbery	5	4	9	12	5	3	5	7	8	5	5	6	8	4	8	7	2	2	9	4	3	5	4	10	11	3	3	3	3	2	4	3	4	6	9	4	8	1	2	6	3	1	3	1	3	223	-67%	
Theft	43	68	69	43	51	55	53	57	50	61	50	47	39	38	42	47	41	43	42	58	59	58	58	37	58	63	35	45	57	58	53	47	54	65	57	71	54	47	47	54	56	59	74	57	58	2378	26%	
Rape	1	7	0	5	1	1	2	0	2	1	3	2	2	0	1	0	0	2	2	6	2	0	1	5	1	4	0	3	2	2	5	1	1	1	1	5	1	3	0	1	3	0	0	2	1	83	0%	
Part 1 Total	134	187	154	149	147	151	131	137	165	136	123	125	111	111	120	109	92	113	110	115	129	119	135	150	158	152	102	119	140	140	144	152	143	149	130	128	92	92	74	91	102	92	115	100	98	5666	-37%	

All Sectors - Part One Crimes - 2020 YTD Trend



Analysis: Though weekly increases and decreases occur within normal limits around the trendline, the overall crime rate continues to decrease in the county.



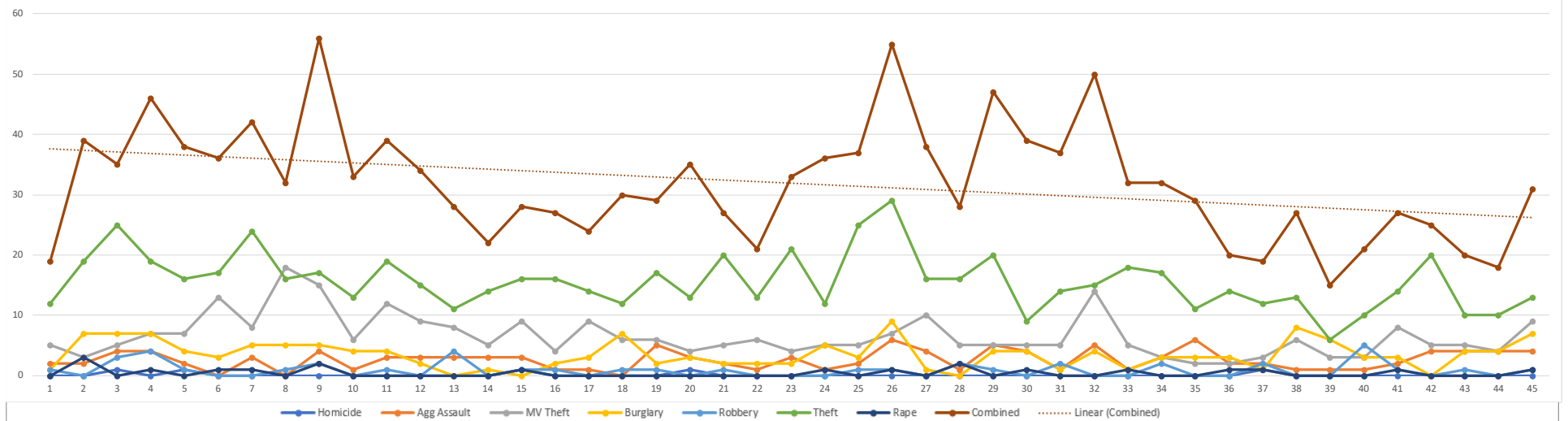
County Crime Statistics Analysis for YTD 2020

Sector 1

Week #

Crime Category	1	2	3	4	5	6	7	8	9	10	11	12	13	14	15	16	17	18	19	20	21	22	23	24	25	26	27	28	29	30	31	32	33	34	35	36	37	38	39	40	41	42	43	44	45	Total	% Change from Week 1		
Homicide	0	0	1	0	1	0	0	0	0	0	0	0	0	0	1	0	0	0	0	1	0	0	0	0	0	0	0	0	0	0	0	0	0	0	0	0	1	0	0	0	0	0	0	0	0	0	0	5	NA
Agg Assault	2	2	4	4	2	0	3	0	4	1	3	3	3	3	3	1	1	0	5	3	2	1	3	1	2	6	4	1	5	4	1	5	1	3	6	2	2	1	1	1	2	4	4	4	4	117	50%		
Vehicle Theft	5	3	5	7	7	13	8	18	15	6	12	9	8	5	9	4	9	6	6	4	5	6	4	5	5	7	10	5	5	5	5	14	5	3	2	2	3	6	3	3	8	5	5	4	9	293	44%		
Burglary	1	7	7	7	4	3	5	5	4	4	2	0	1	0	2	3	7	2	3	2	2	2	5	3	9	1	0	4	4	1	4	1	3	3	3	1	8	6	3	3	0	4	4	7	155	86%			
Robbery	1	0	3	4	1	0	0	1	2	0	1	0	4	0	1	1	0	1	1	0	1	0	0	0	1	1	0	2	1	0	2	0	0	2	0	0	2	0	0	5	1	0	1	0	1	41	0%		
Theft	12	19	25	19	16	17	24	16	17	13	19	15	11	14	16	16	14	12	17	13	20	13	21	12	25	29	16	16	20	9	14	15	18	17	11	14	12	13	6	10	14	20	10	10	13	703	8%		
Rape	0	3	0	1	0	1	1	0	2	0	0	0	0	0	1	0	0	0	0	0	0	0	0	1	0	1	0	2	0	1	0	0	1	0	0	1	1	0	0	1	0	0	0	1	19	100%			
Part 1 Total	19	39	35	46	38	36	42	32	56	33	39	34	28	22	28	27	24	30	29	35	27	21	33	36	37	55	38	28	47	39	37	50	32	32	29	20	19	27	15	21	27	25	20	18	31	1436	39%		

Sector 1 - Part One Crimes - 2020 YTD Trend



Analysis: Though weekly increases and decreases occur within normal limits around the trendline, the overall crime rate continues to decrease in the sector.



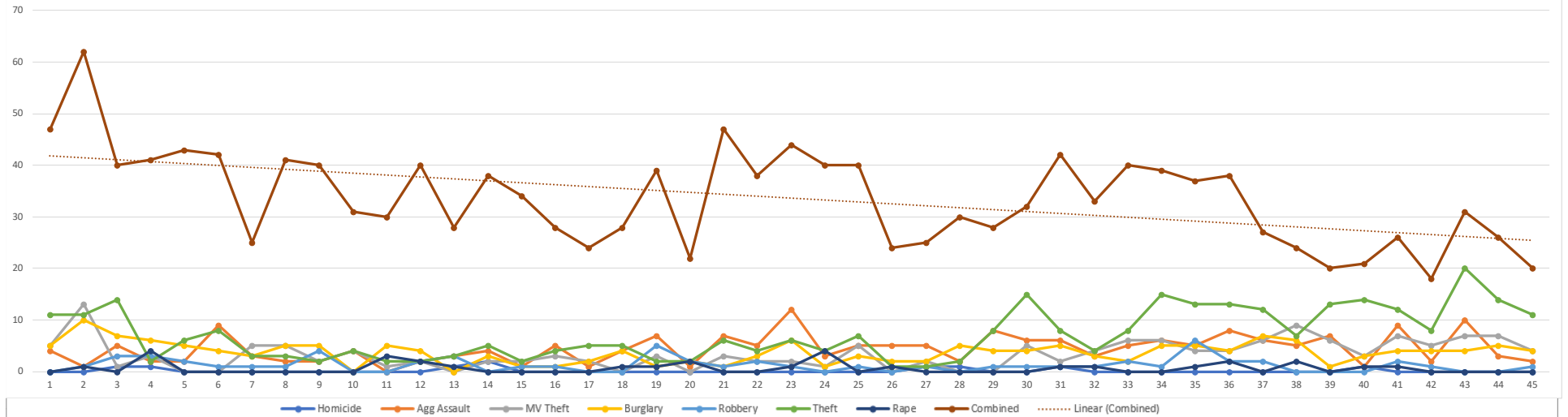
County Crime Statistics Analysis for YTD 2020

Sector 2

Week #

Crime Category	1	2	3	4	5	6	7	8	9	10	11	12	13	14	15	16	17	18	19	20	21	22	23	24	25	26	27	28	29	30	31	32	33	34	35	36	37	38	39	40	41	42	43	44	45	Total	% Change from Week 1		
Homicide	0	0	1	1	0	0	0	0	0	0	0	0	1	2	0	0	0	0	0	0	0	0	0	0	0	0	0	1	1	0	0	1	0	0	0	0	0	0	0	1	0	0	0	0	0	0	0	9	NA
Agg Assault	4	1	5	2	2	9	3	2	2	4	0	2	3	4	1	5	1	4	7	1	7	5	12	3	5	5	5	2	8	6	6	3	5	6	5	8	6	5	7	1	9	2	10	3	2	198	-100%		
Vehicle Theft	5	13	1	3	0	0	5	5	2	4	1	2	0	2	2	3	2	0	3	0	3	2	2	1	5	0	2	0	0	5	2	4	6	6	4	4	6	9	6	3	7	5	7	7	4	153	-25%		
Burglary	5	10	7	6	5	4	3	5	5	0	5	4	0	3	1	1	2	4	1	2	1	3	6	1	3	2	2	5	4	4	5	3	2	5	5	4	7	6	1	3	4	4	4	5	4	166	-25%		
Robbery	0	1	3	3	2	1	1	1	4	0	0	2	3	0	1	1	0	0	5	2	1	2	1	0	1	0	1	0	1	1	1	1	2	1	6	2	2	0	0	0	2	1	0	0	1	57	100%		
Theft	11	11	14	2	6	8	3	3	2	4	2	2	3	5	2	4	5	5	2	2	6	4	6	4	7	1	1	2	8	15	8	4	8	15	13	13	12	7	13	14	12	8	20	14	11	322	0%		
Rape	0	1	0	4	0	0	0	0	0	0	3	2	1	0	0	0	0	1	1	2	0	0	1	4	0	1	0	0	0	1	1	0	0	1	2	0	2	0	1	1	0	0	0	0	30	NA			
Part 1 Total	47	62	40	41	43	42	25	41	40	31	30	40	28	38	34	28	24	28	39	22	47	38	44	40	40	24	25	30	28	32	42	33	40	39	37	38	27	24	20	21	26	18	31	26	20	1513	-135%		

Sector 2 - Part One Crimes - 2020 YTD Trend



Analysis: Though weekly increases and decreases occur within normal limits around the trendline, the overall crime rate continues to decrease in the sector.



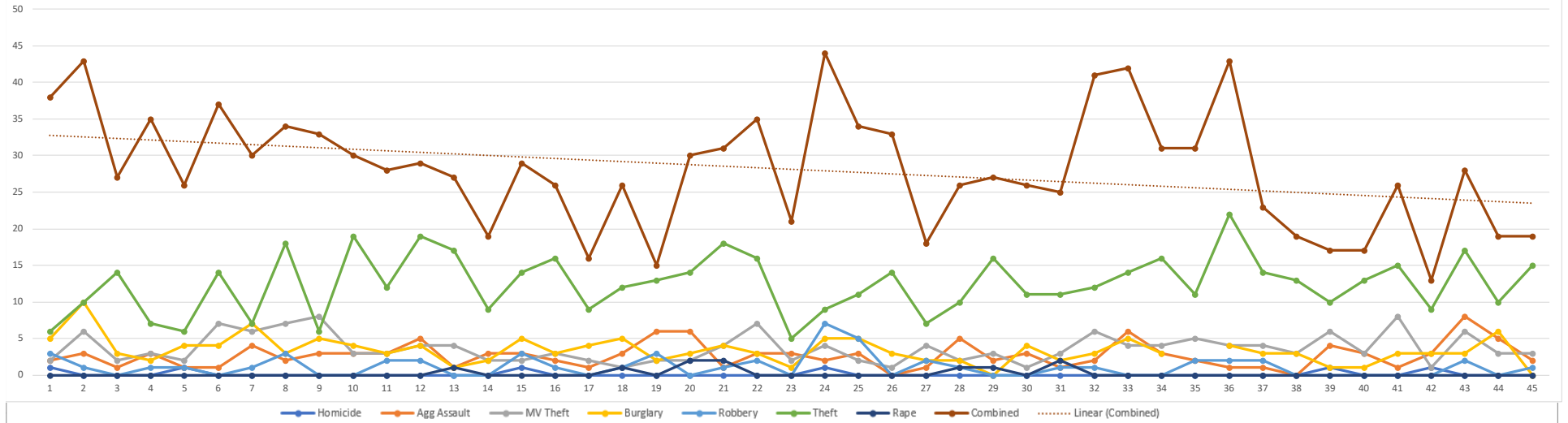
County Crime Statistics Analysis for YTD 2020

Sector 3

Week #

Crime Category	1	2	3	4	5	6	7	8	9	10	11	12	13	14	15	16	17	18	19	20	21	22	23	24	25	26	27	28	29	30	31	32	33	34	35	36	37	38	39	40	41	42	43	44	45	Total	% Change from Week 1	
Homicide	0	0	0	1	0	0	0	0	0	0	0	0	0	0	1	0	0	0	0	0	0	0	0	1	0	0	0	0	0	0	0	0	0	0	0	0	0	0	0	1	0	0	1	0	0	0	6	NA
Agg Assault	3	1	3	1	1	4	2	3	3	3	5	1	3	3	2	1	3	6	6	1	3	3	2	3	0	1	5	2	3	1	2	6	3	2	1	1	0	4	3	1	3	8	5	2	121	0%		
Vehicle Theft	6	2	3	2	7	6	7	8	3	3	4	4	2	2	3	2	1	2	2	4	7	2	4	2	1	4	2	3	1	3	6	4	4	5	4	4	3	6	3	8	1	6	3	3	164	33%		
Burglary	10	3	2	4	4	7	3	5	4	3	4	1	2	5	3	4	5	2	3	4	3	1	5	5	3	2	2	0	4	2	3	5	3	4	3	3	1	1	3	3	3	6	0	148	NA			
Robbery	1	0	1	1	0	1	3	0	0	2	2	0	0	3	1	0	1	3	0	1	2	0	7	5	0	2	1	0	0	1	1	0	0	2	2	2	0	0	0	0	0	2	0	1	51	-200%		
Theft	10	14	7	6	14	7	18	6	19	12	19	17	9	14	16	9	12	13	14	18	16	5	9	11	14	7	10	16	11	11	12	14	16	11	22	14	13	10	13	15	9	17	10	15	561	60%		
Rape	0	0	0	0	0	0	0	0	0	0	0	1	0	0	0	0	1	0	2	2	0	0	0	0	0	0	0	1	1	0	0	0	0	0	0	0	0	0	0	0	0	0	0	0	10	NA		
Part 1 Total	38	43	27	35	26	37	30	34	33	30	28	29	27	19	29	26	16	26	15	30	31	35	21	44	34	33	18	26	27	26	25	41	42	31	31	43	23	19	17	17	26	13	28	19	19	1267	-100%	

Sector 3 - Part One Crimes - 2020 YTD Trend



Analysis: Though weekly increases and decreases occur within normal limits around the trendline, the overall crime rate continues to decrease in the sector.



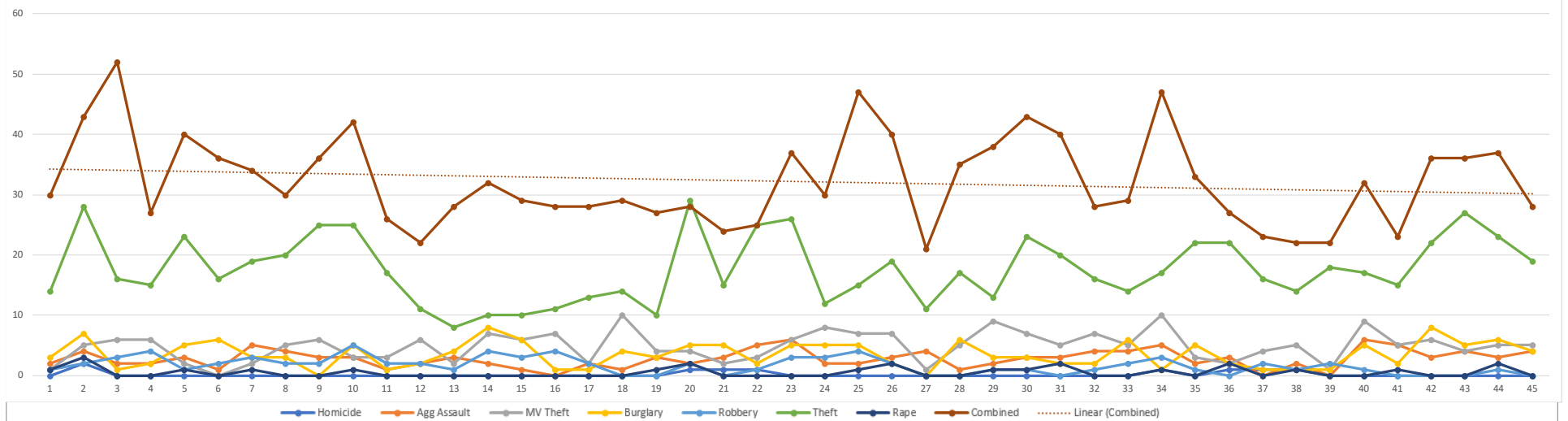
County Crime Statistics Analysis for YTD 2020

Sector 4

Week #

Crime Category	1	2	3	4	5	6	7	8	9	10	11	12	13	14	15	16	17	18	19	20	21	22	23	24	25	26	27	28	29	30	31	32	33	34	35	36	37	38	39	40	41	42	43	44	45	Total	% Change from Week 1		
Homicide	0	2	0	0	0	0	0	0	0	0	0	0	0	0	0	0	0	0	0	1	1	1	0	0	0	0	0	0	0	0	0	0	0	1	0	1	1	1	0	0	0	0	0	0	0	0	0	9	NA
Agg Assault	2	4	2	2	3	1	5	4	3	3	1	2	3	2	1	0	2	1	3	2	3	5	6	2	2	3	4	1	2	3	3	4	4	5	2	3	0	2	0	6	5	3	4	3	4	125	50%		
Vehicle Theft	1	5	6	6	2	0	2	5	6	3	3	6	2	7	6	7	2	10	4	4	2	3	6	8	7	7	1	5	9	7	5	7	5	10	3	2	4	5	1	9	5	6	4	5	5	218	80%		
Burglary	3	7	1	2	5	6	3	3	0	5	1	2	4	8	6	1	1	4	3	5	5	2	5	5	5	2	0	6	3	3	2	2	6	1	5	2	1	1	1	5	2	8	5	6	4	157	25%		
Robbery	1	2	3	4	1	2	3	2	2	5	2	2	1	4	3	4	2	0	0	2	0	1	3	3	4	2	0	0	1	1	0	1	2	3	1	0	2	1	2	1	0	0	0	1	0	74	NA		
Theft	14	28	16	15	23	16	19	20	25	25	17	11	8	10	10	11	13	14	10	29	15	25	26	12	15	19	11	17	13	23	20	16	14	17	22	22	16	14	18	17	15	22	27	23	19	792	26%		
Rape	1	3	0	0	1	0	1	0	0	1	0	0	0	0	0	0	0	0	0	1	2	0	0	0	0	1	2	0	0	1	1	2	0	0	1	0	2	0	1	0	0	1	0	0	2	0	24	NA	
Part 1 Total	30	43	52	27	40	36	34	30	36	42	26	22	28	32	29	28	28	29	27	28	24	25	37	30	47	40	21	35	38	43	40	28	29	47	33	27	23	22	22	32	23	36	37	28	1450	-7%			

Sector 4 - Part One Crimes - 2020 YTD Trend



Analysis: Though weekly increases and decreases occur within normal limits around the trendline, the overall crime rate continues to decrease in the sector.